



Lantmännens



# Opportunities and challenges with PEF

Martin Laurentz, Sustainability Project Manager, Lantmännens

Product Environmental Footprint (PEF) of agricultural products - Helsinki, 180919

# The Lantmännen model

Lantmännen is no ordinary company.

We are owned by 25,000 Swedish farmers with the assignment to contribute to the profitability of the farms, and optimize the return on the owners' capital in the association.

- Lantmännen is a farmers cooperative that operates both locally and in an international market
- Lantmännen is a business partner of the farmers
- Lantmännen conducts research and innovation for food of the future, bioenergy and farming for tomorrow
- With farmland as our basis, Lantmännen creates the value throughout the value chain from field to fork



# From a sustainability perspective, grain production is the most important part of the food value chain

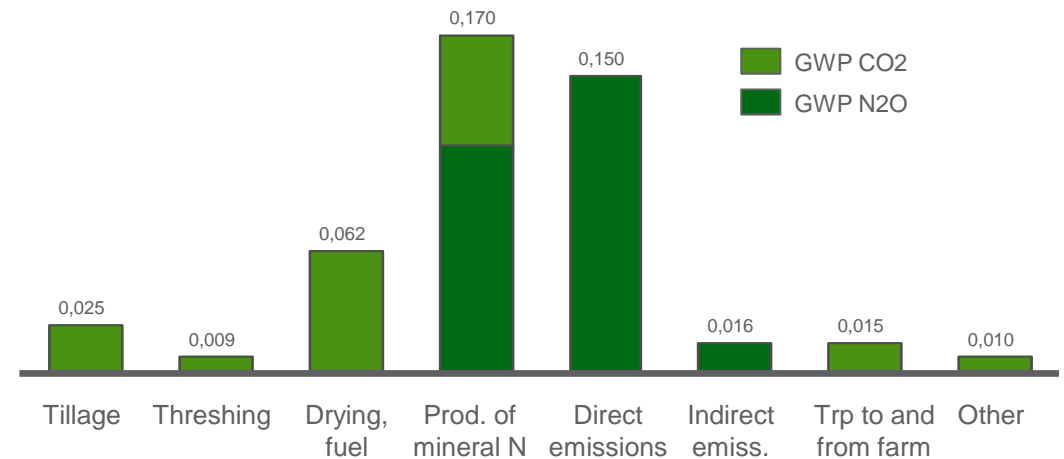
The major part of value, nutritional content and energy, but also climate impact is created in cultivation

Environmental impact (CO<sub>2</sub>e) from Core wheat flour  
**The cultivation part of the total environmental impact of the product**



**The cultivation part**

Environmental impact (Global Warming Potential, GWP) in grain production  
**The cultivation part - Environmental impact, details**



Source: Lantmännen's internal data



# What do we want from a PEF

## For the industry

- Science based and reliable
- Standardised and well established
- Well-known and credible
- Cost efficient and easy to calculate
- Basis for continuous improvement
- Driver for change

## For the consumer

- Relevant to stakeholders
- Transparent and reliable
- Accessible and easy to use/understand
- Basis for customer decisions
- Driver for change

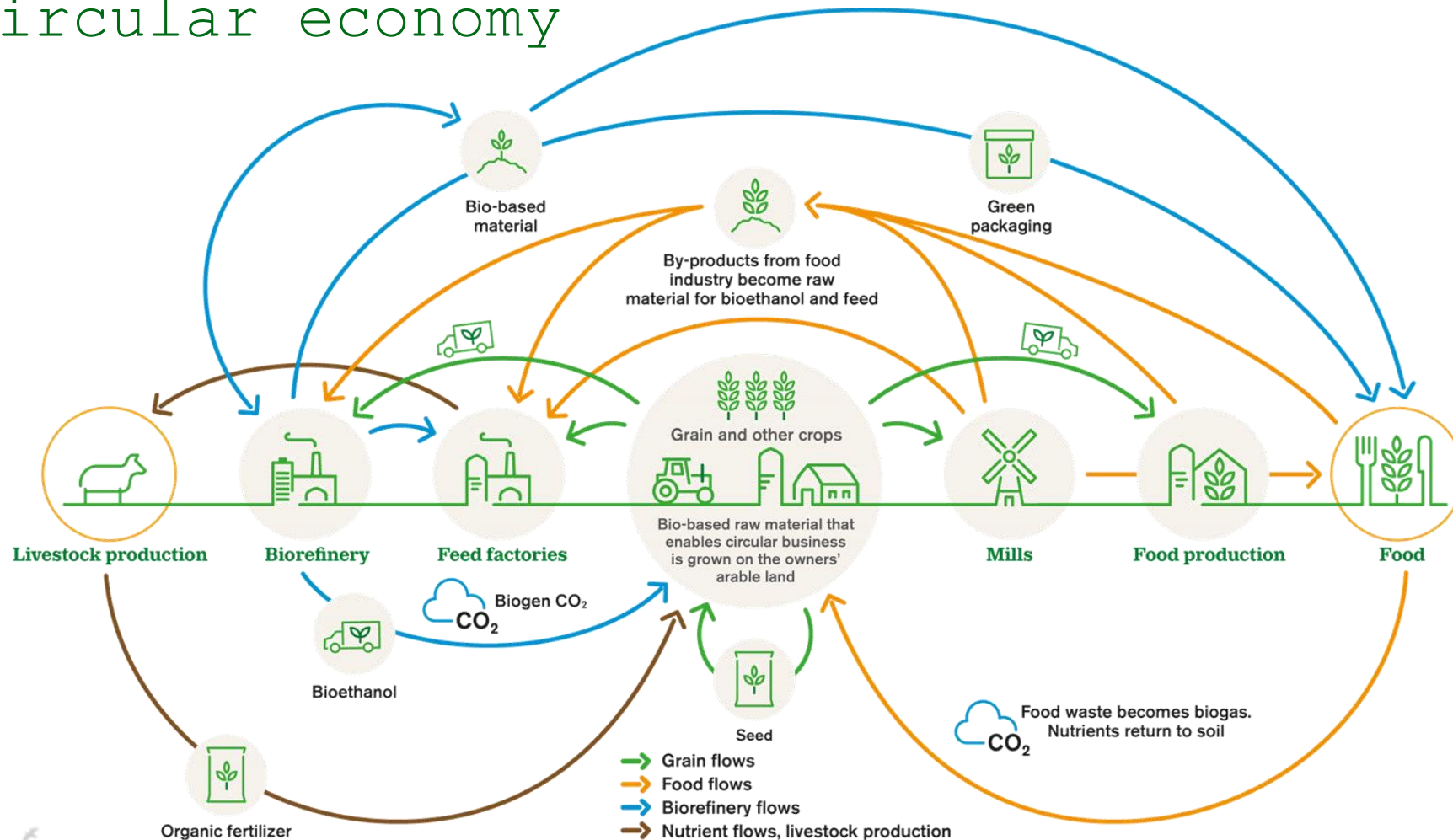


# Thoughts to consider

- Compete on performance and not on methods or data quality
- Possibility to differentiate on environmental performance (generic vs. specific data)
- Need for regional data
- How to consider biodiversity and other impact that is difficult to quantify in a LCA
- What is a relevant functional unit (ton, kcal, nutrients etc.)
- Requirements on data quality and margin of error
- Circular flows and allocations
- Transparency and cooperation in the value chain (loop?)



Operations throughout the chain from field to fork provide us with opportunities to realize a circular economy





We make farming thrive